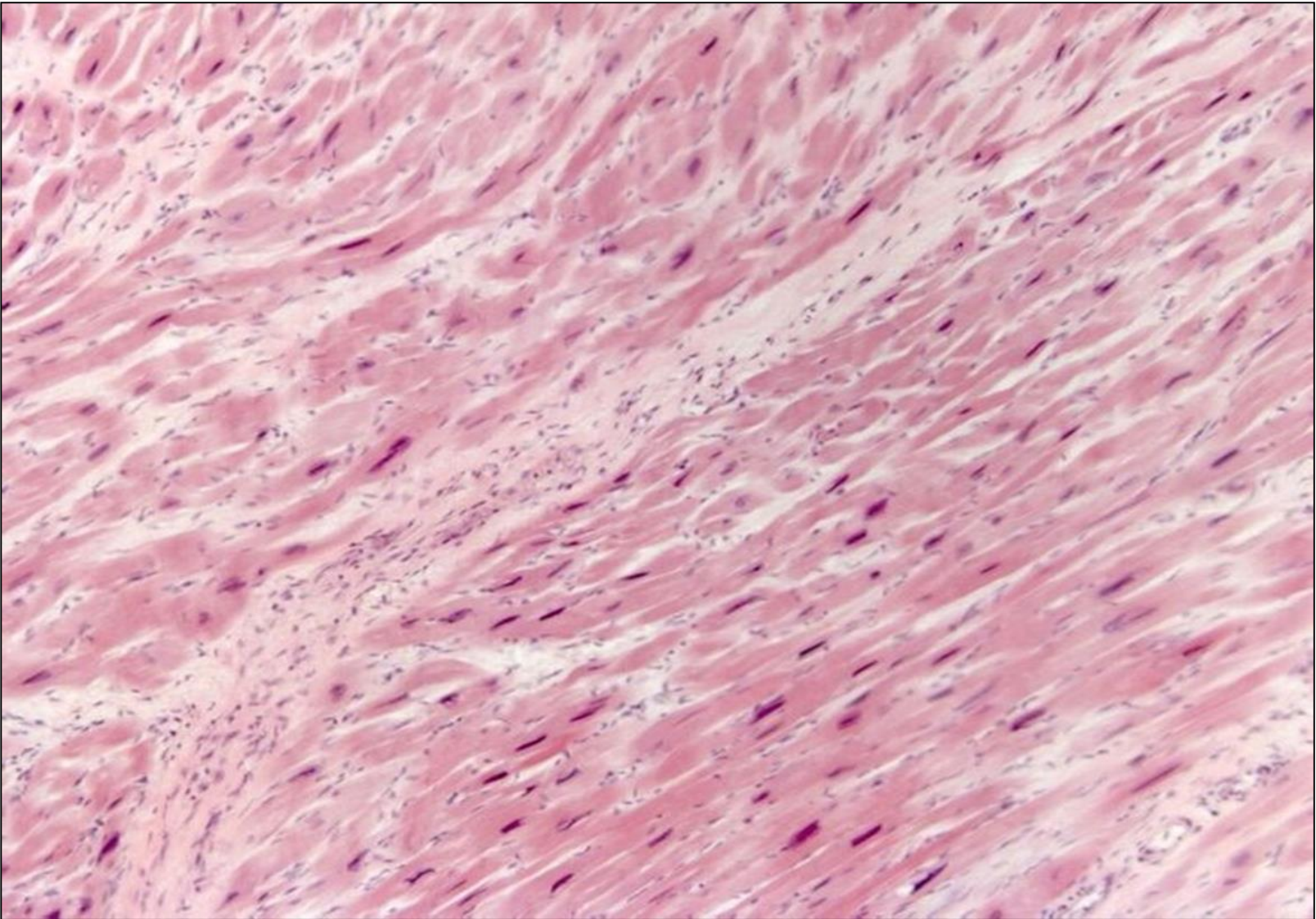
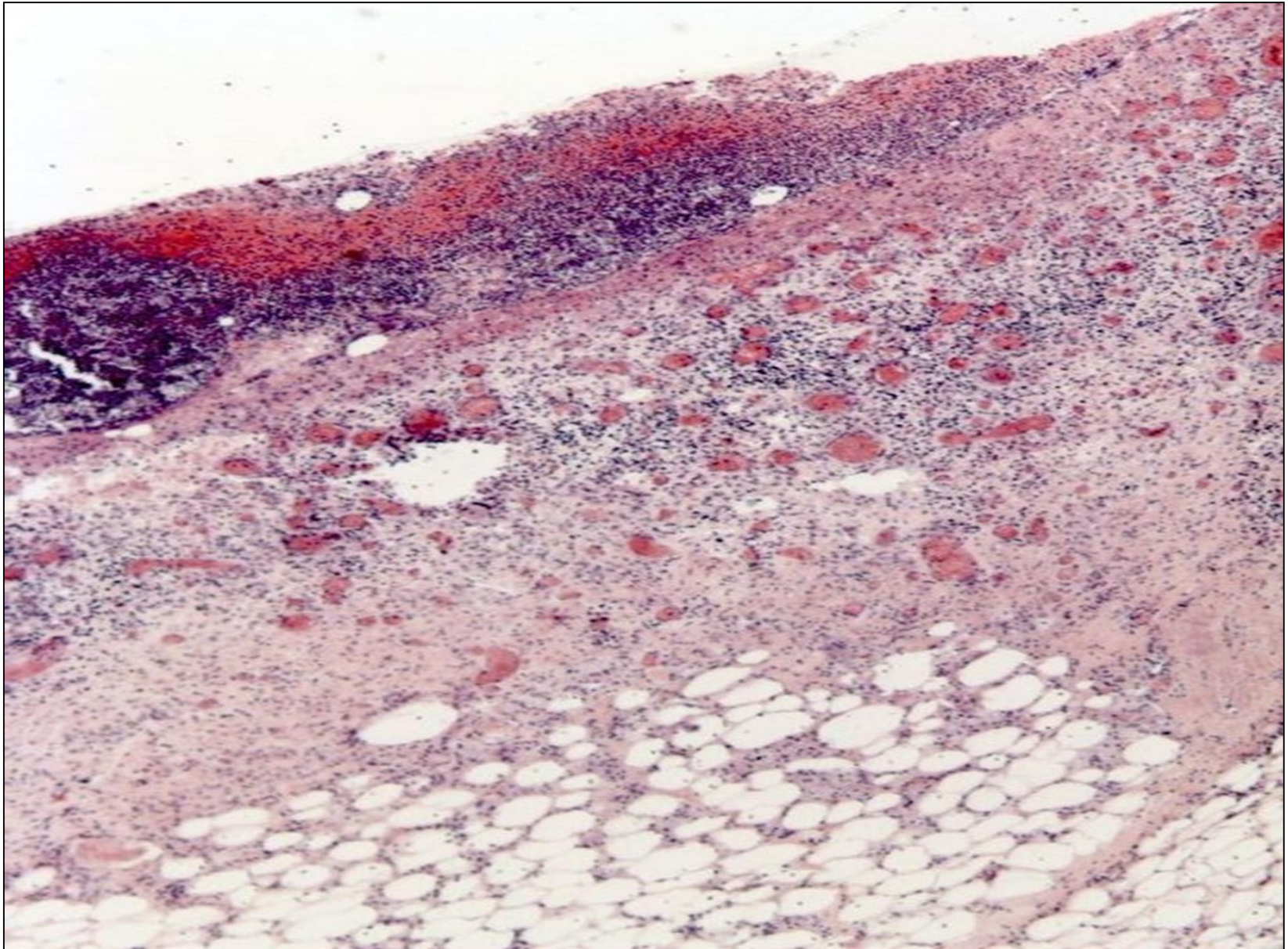


# Microscopic preparations for midterm control in section 2



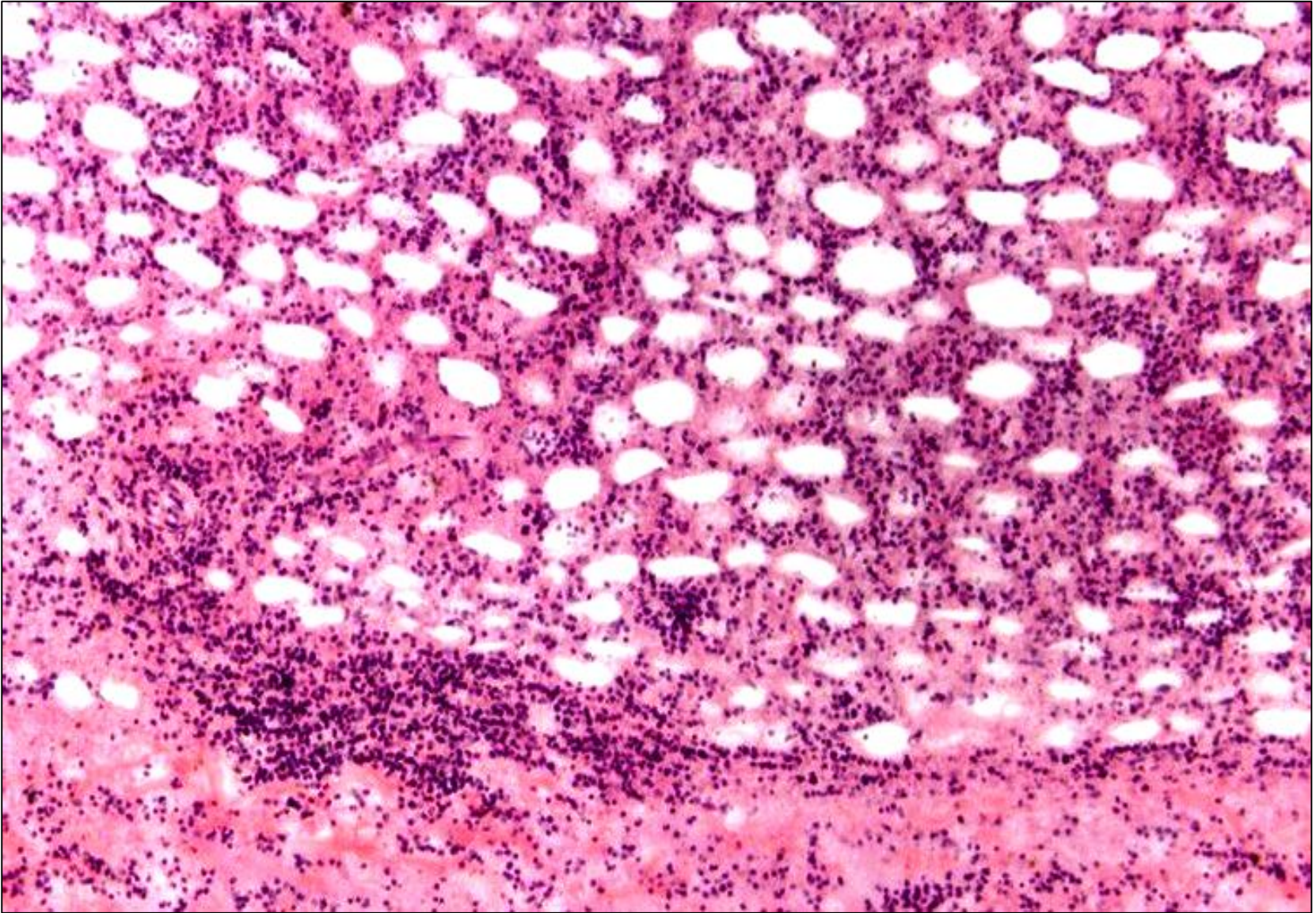
Myocardial hypertrophy





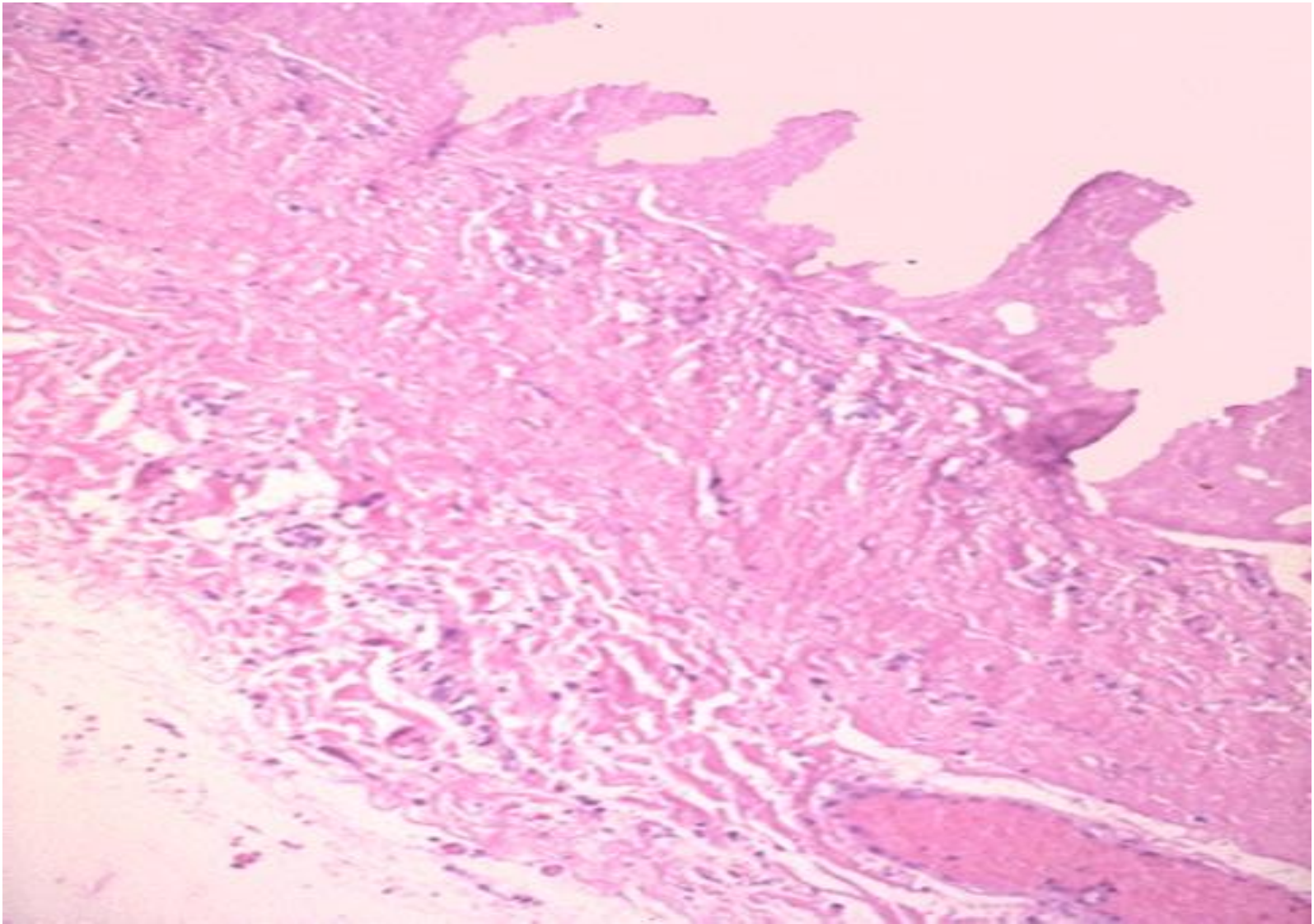
Granulation Tissue





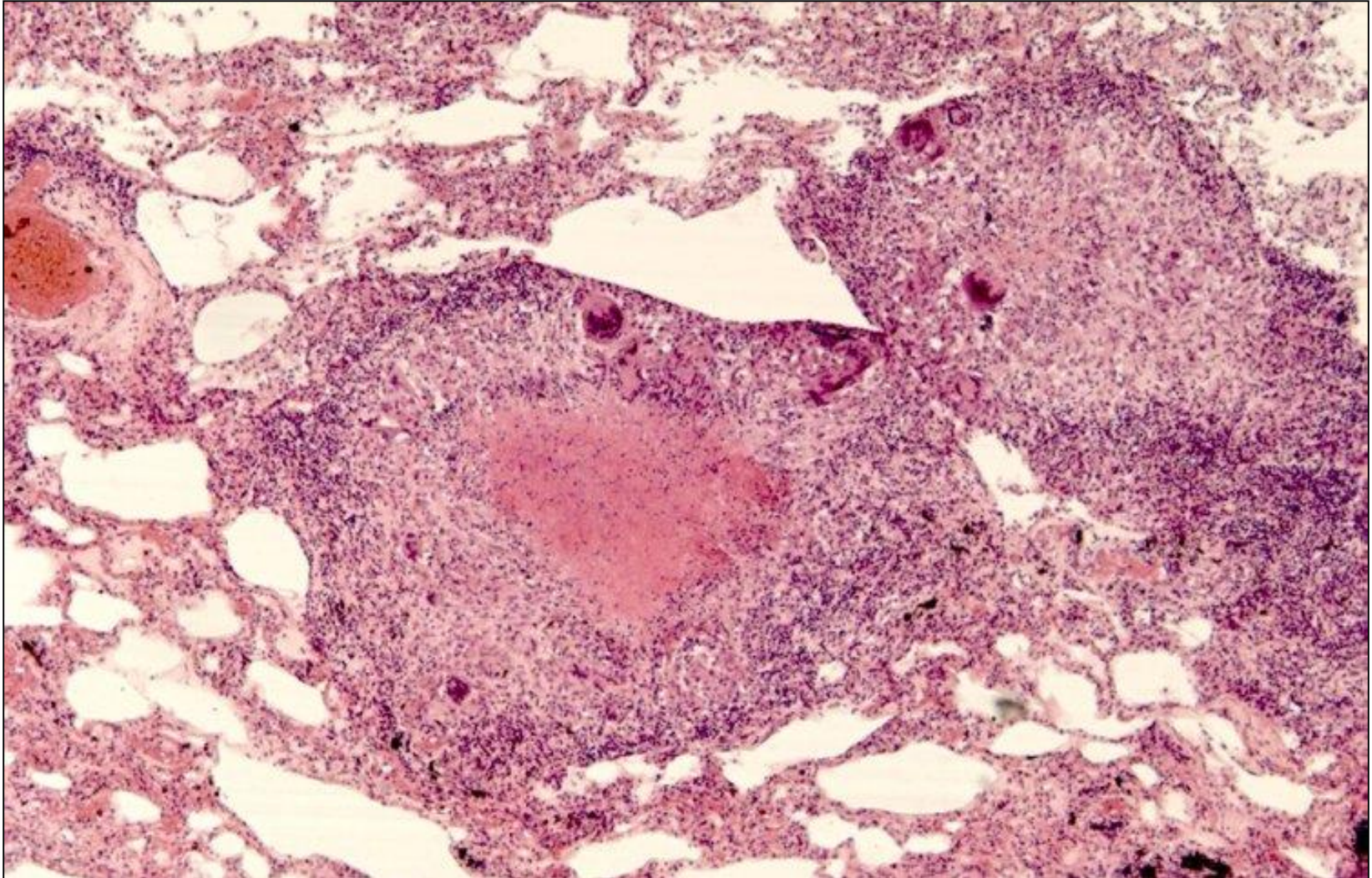
Phlegmon of subcutaneous tissue





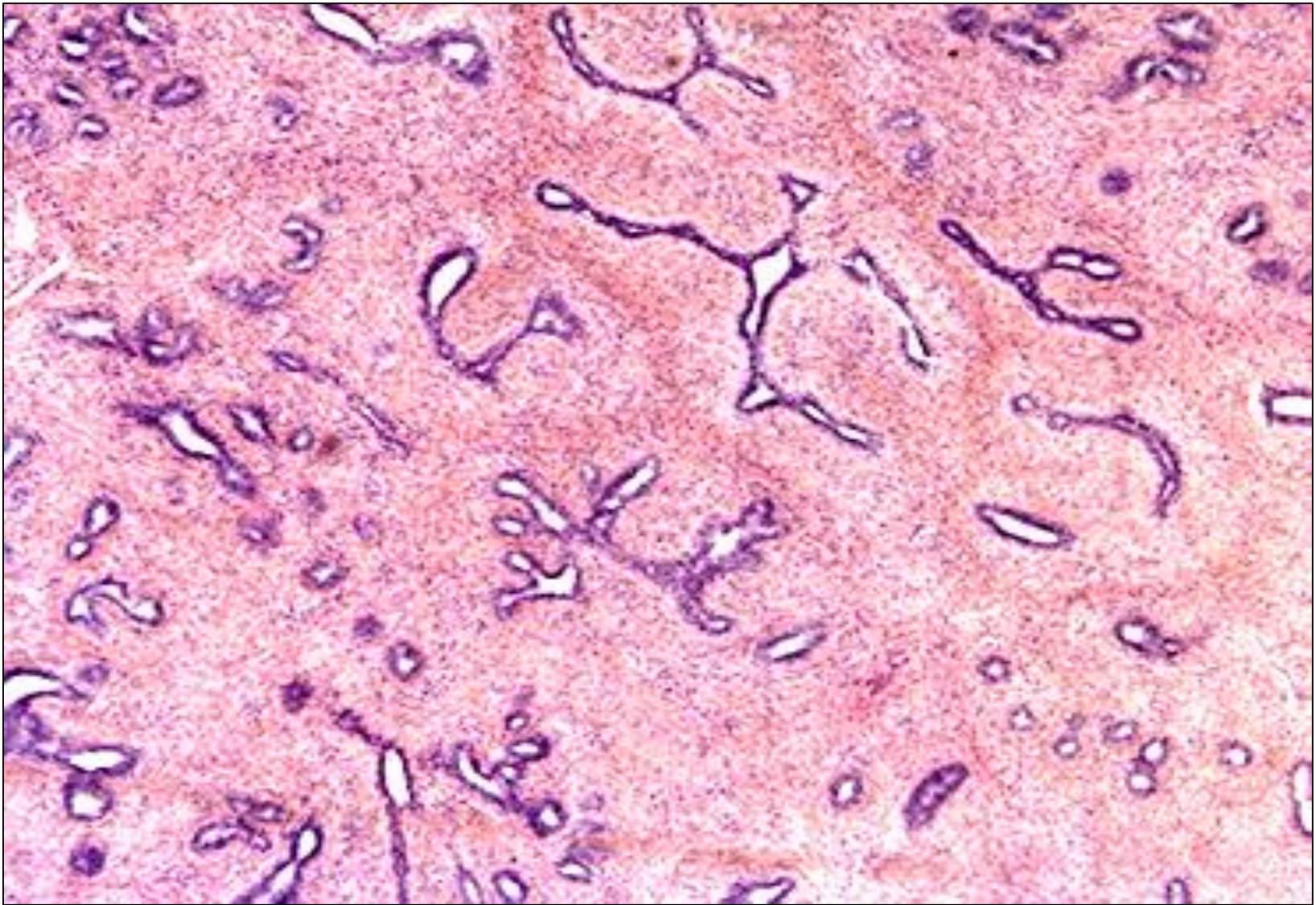
Fibrinous pericarditis





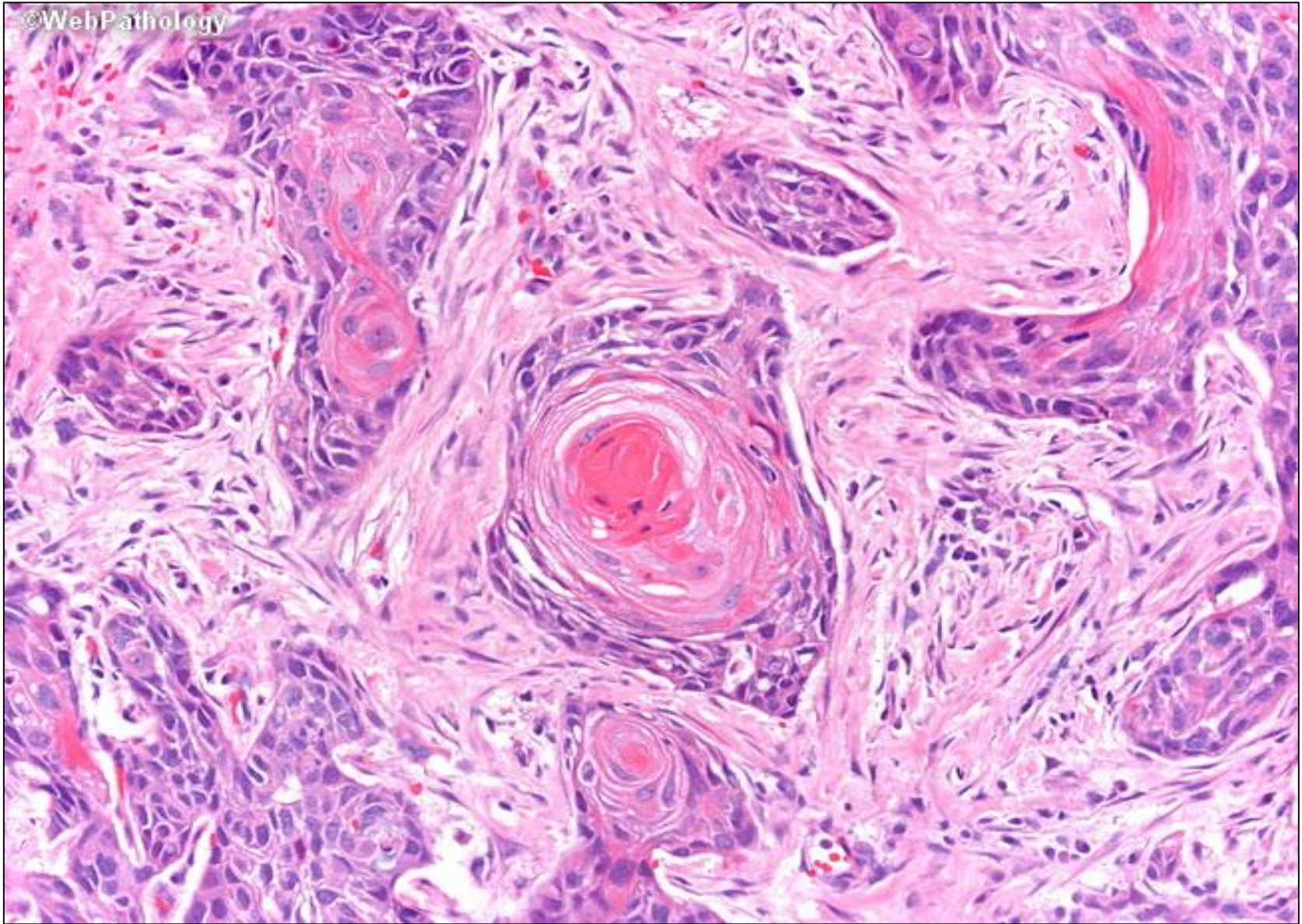
Tuberculous granuloma (miliary pulmonary tuberculosis)





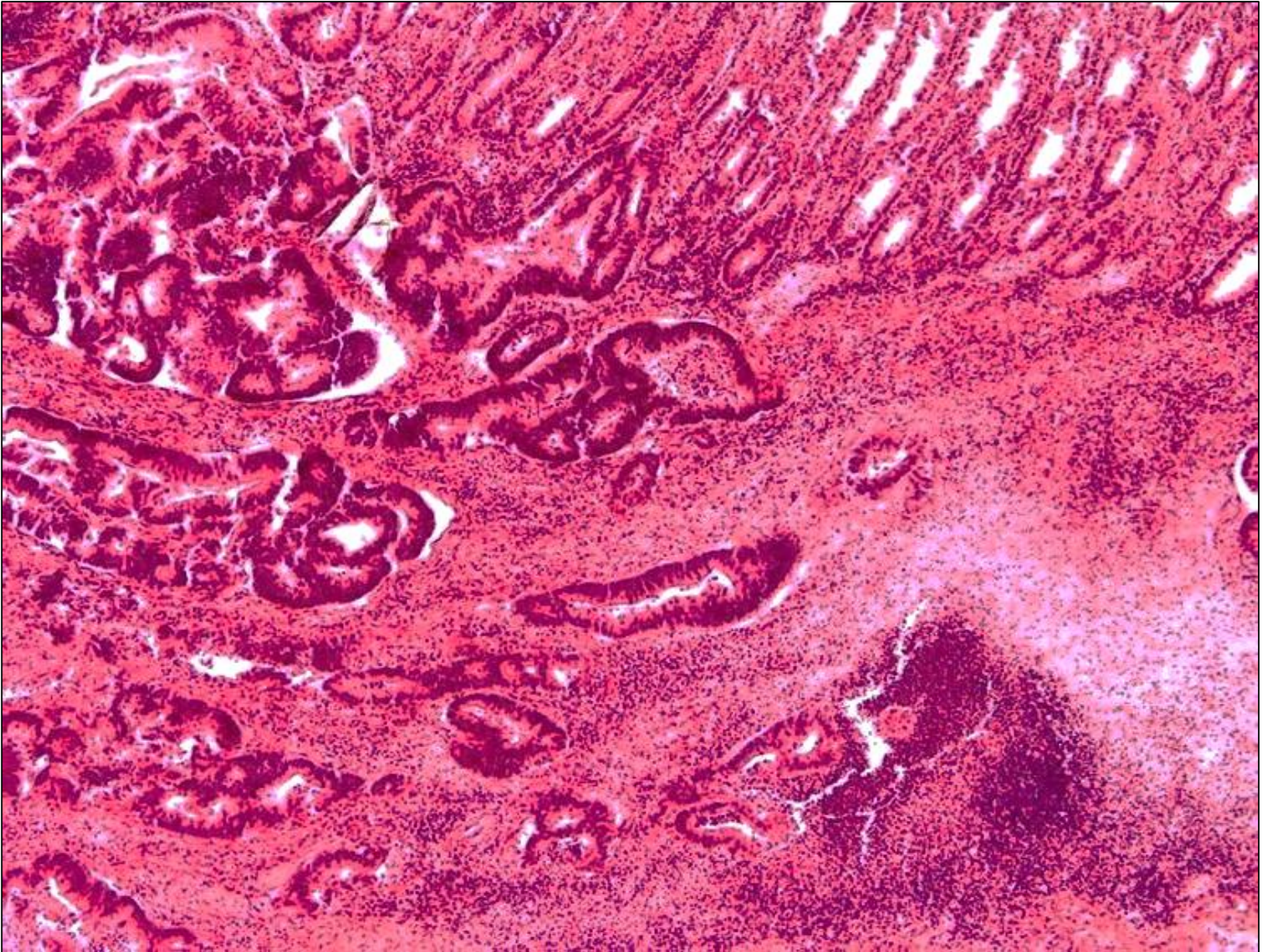
Breast fibroadenoma





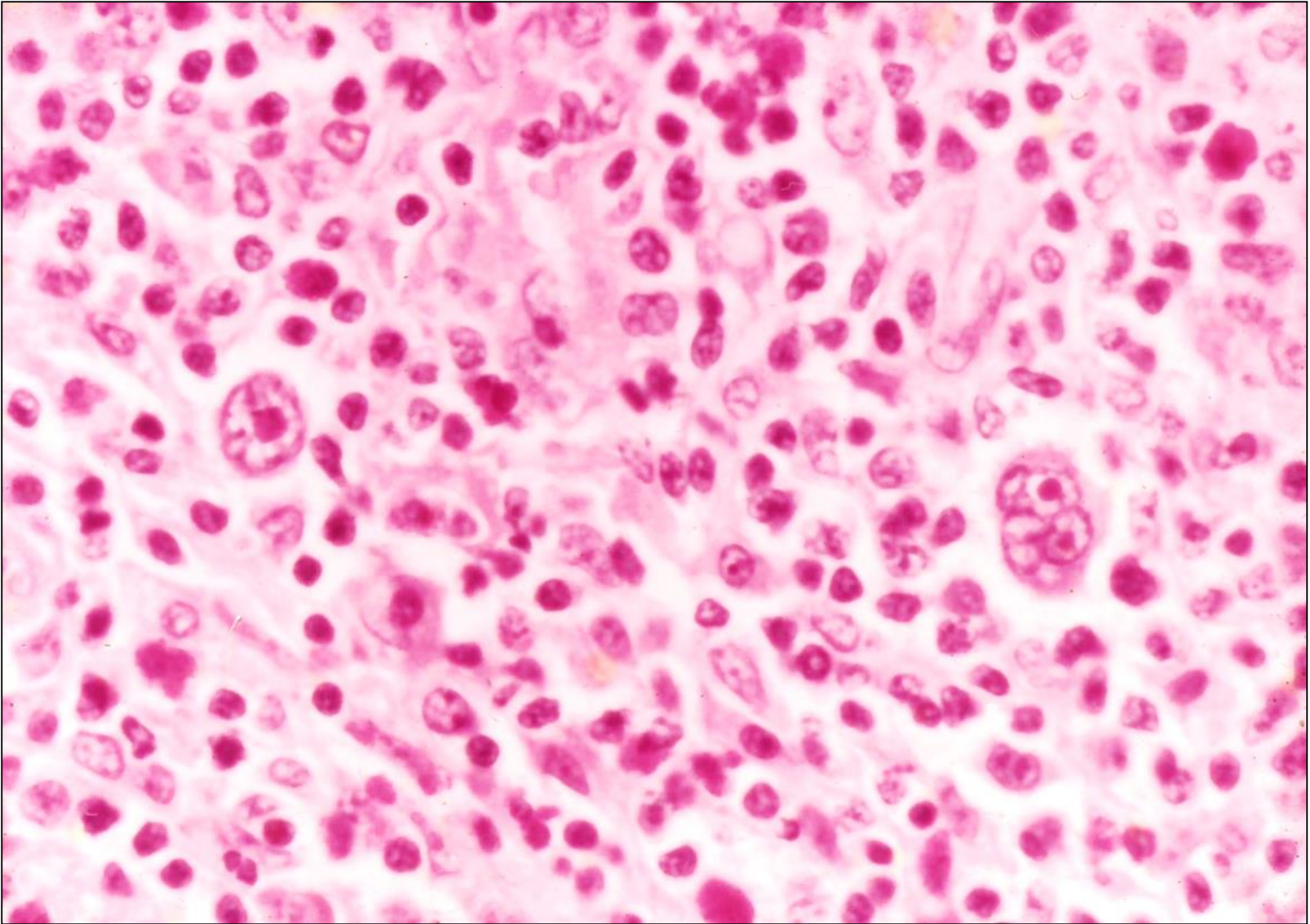
Squamous cell keratinizing carcinoma of the esophagus





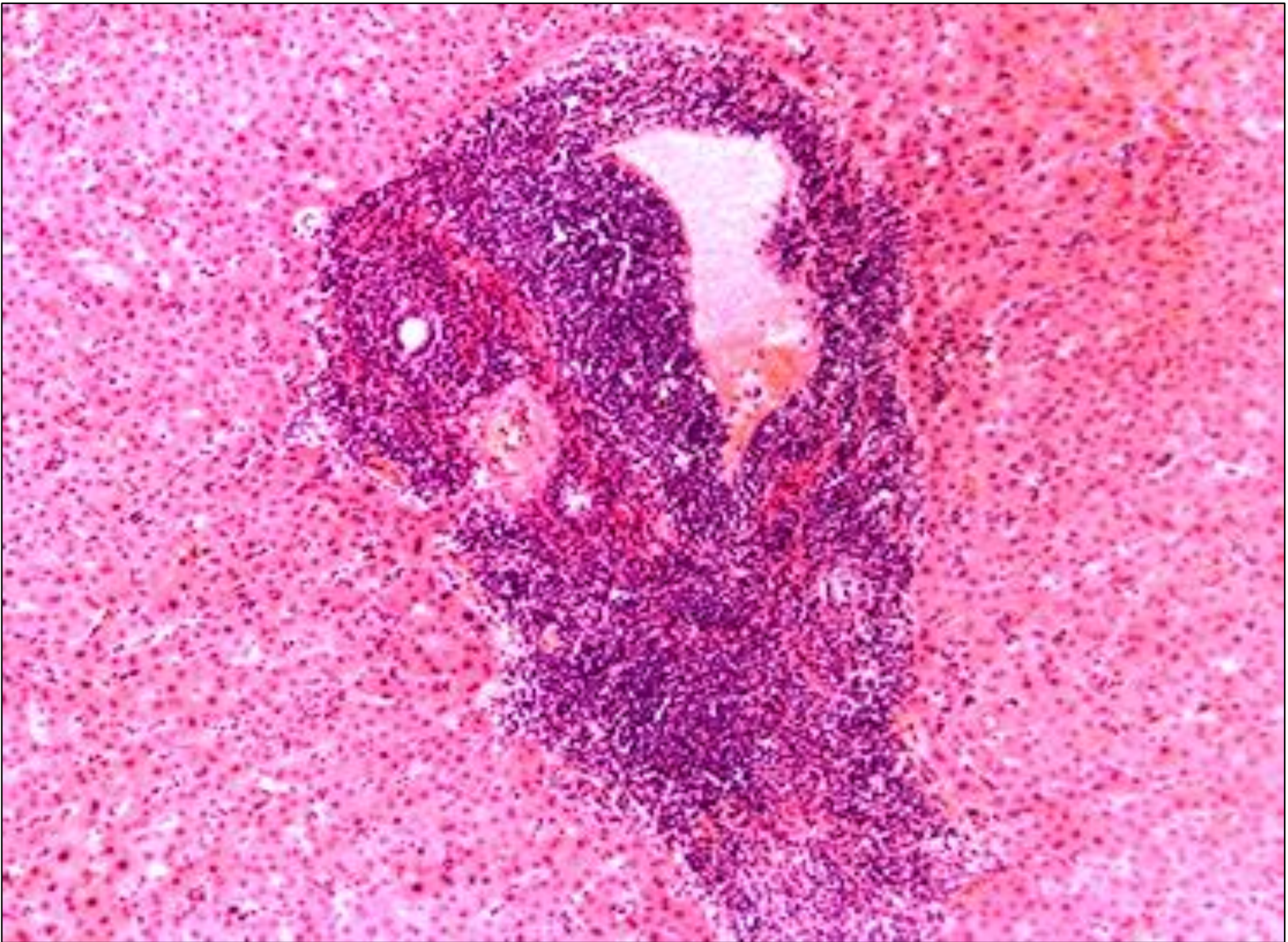
Adenocarcinoma of the stomach





Lymph node in Hodgkin's lymphoma





Liver in lymphocytic leukemia